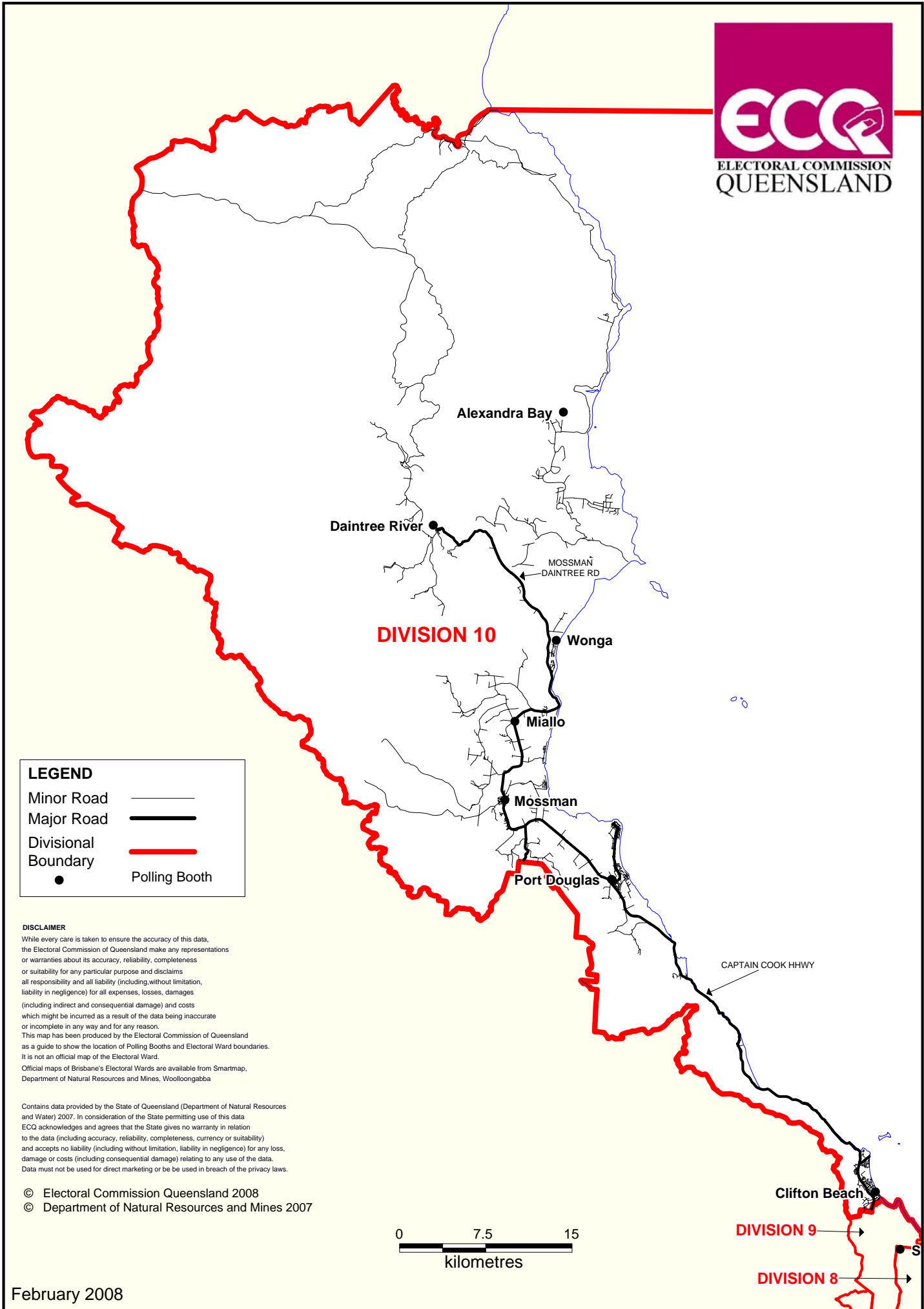


# CAIRNS REGIONAL COUNCIL ELECTION 2008 SHOWING POLLING BOOTH LOCATIONS

Division 10

Electors at close of Roll: 8,973

No. of Booths: 9



LEGEND	
Minor Road	—
Major Road	—
Divisional Boundary	—
●	Polling Booth

**DISCLAIMER**  
 While every care is taken to ensure the accuracy of this data, the Electoral Commission of Queensland make any representations or warranties about its accuracy, reliability, completeness or suitability for any particular purpose and disclaims all responsibility and all liability (including, without limitation, liability in negligence) for all expenses, losses, damages (including indirect and consequential damage) and costs which might be incurred as a result of the data being inaccurate or incomplete in any way and for any reason. This map has been produced by the Electoral Commission of Queensland as a guide to show the location of Polling Booths and Electoral Ward boundaries. It is not an official map of the Electoral Ward. Official maps of Brisbane's Electoral Wards are available from Smartmap, Department of Natural Resources and Mines, Woolloongabba

Contains data provided by the State of Queensland (Department of Natural Resources and Water) 2007. In consideration of the State permitting use of this data ECQ acknowledges and agrees that the State gives no warranty in relation to the data (including accuracy, reliability, completeness, currency or suitability) and accepts no liability (including without limitation, liability in negligence) for any loss, damage or costs (including consequential damage) relating to any use of the data. Data must not be used for direct marketing or be used in breach of the privacy laws.

© Electoral Commission Queensland 2008  
 © Department of Natural Resources and Mines 2007

